

**E.M.O. CIVIL**  
*Dig deep. Go beyond.*

## COMPANY PROFILE





## Steve Emerton, Director's Statement

For over 35 years, the foundation of EMO Civil has been based on the motive and goal to create, implement and solve unique projects throughout Sydney to ensure sustainable construction.

Infrastructure projects including urban spaces that are well planned and executed are crucial to the busy environment we live in. The safety, wellbeing and happiness of many are just a few factors which are significantly improved through the built environment.

The planning and development of new buildings contributes heavily to the growth of many Australian owned businesses. This combined with new government infrastructure and green spaces, strongly improves the liveability of a suburb.

EMO Civil are proud to contribute to many of these new projects and strive to lead the construction industry as a demolition, civil and landscape contractor. By partnering up with the best we aim to deliver all jobs to the highest quality. Our mission to be the best has maintained our successful operation.

EMO Civil work endlessly to handover projects to the community on time and on budget without sacrificing safety, quality, environmental protection and the relationships built between the client and our team.

Our clients, subcontractors and suppliers are of the upmost importance to us and this is demonstrated through the long-term relationships the team holds with many in the sector. EMO Civil continue to support those people who matter the most, and will do all that is possible to maintain these relationships.

Through developing a strong and competent team, EMO Civil are able to adapt and efficiently complete demolition, civil and landscaping projects of all sizes and complexity.

We own and have access to all types of equipment from the very small to the very large, keeping EMO Civil competitive and reliable. We are always focused and ready to take on the next big or small job!

Sincerely,

Steve Emerton,  
Managing Director

"From Wet 'n' Wild to Warwick Farm Racecourse, we strive to focus on quality. We have the experience to deliver large projects but also excel in the smaller ones. We are always up for the job no matter what."

Steve Emerton,  
Managing Director





# ABOUT US

A wealth of experience in the industry has led the team to deliver some of Sydney's most iconic and important building and infrastructure projects. We've grown from a small domestic-focused company into an organisation that operates on a commercial scale. EMO Civil are committed to creating partnerships with clients who are trusting in our work.

## REMEDIATION

Land contamination is a major unforeseen issue in many projects throughout Sydney. We provide a cost effective solution to remediate the site to ensure minimal delays to the original plan.

## STORMWATER INFRASTRUCTURE

From pits and pipes to valve gates and culverts, we are equipped and have the knowledge to deliver stormwater infrastructure to meet design and authority requirements. We have been involved in stormwater drainage construction for Blacktown City Council, Data Centres and more.

## PAVEMENTS

Subgrade up to finish level, we offer our pavement services for road works, public domain and general landscaping. We install pavements with best practice to ensure longevity is achieved. Project examples include Flower Power Erskine Park and Samantha Riley Drive in Kellyville.

## CONTRACTING

We offer a range of civil and landscaping services tailored to suit your project needs. Having worked for many Tier 1 contractors, home developers and government bodies, our solution takes into consideration many risks which may not be evident at first.

## EXCAVATION

EMO Civil prides itself for our bulk and detailed excavation. This is our bread and butter and our skills are second to none. We have completed many site preparation services for tier 1 builders as well as general earthworks for developers and government bodies. Wet 'n' Wild and Andrew Boy Charlton Swim Centre Manly are just some examples of projects which we have completed excavation for.

## DEMOLITION

We provide an all inclusive demolition service whether it be a small house, unit or warehouse. We are licensed under SafeWork NSW and have an experienced team to ensure the job is completed safely to your needs. We have completed demolition in projects such as the Locker Room Hotel Sydney Olympic Park.

## LANDSCAPING

Whether it be a park, riparian corridor, streetscape or an apartment block, our landscape team can offer a solution to your project. We have quality and reliable suppliers to ensure your job meets the expectations. The Airport East Precinct Upgrade project local to the domestic airport is an example of the landscaping we've completed for RMS NSW.





# COMMERCIAL

The increased demand for housing has also increased the demand for clever infrastructure and building developments. More and more projects are focused on delivering smart innovative solutions to ensure the local community have a heightened sense of liveability.

Builders, Developers and Tier 1 Contractors are all in the mix of those who we service in the commercial sector. Our competitive pricing and integrated management system allows us to deliver projects as specified, collaboratively solving any problems along the way.





# RESIDENTIAL

At EMO Civil, we understand quality and timing is of the utmost significance, especially to developers and builders in the residential sector. Our team is trained and experienced in delivering projects with a high attention to detail to allow our clients to have peace of mind.

Our solid preparation skills along with neat landscape finishes will provide an all inclusive service for all external civil and landscaping works. We will accommodate your needs and build a relationship based on trust.





# OUR TEAM

*EMO Civil is a dedicated team of Project Managers, Civil Engineers, Landscapers, Operators, Labourers and Contractors.*

## MANAGING DIRECTOR – STEVE EMERTON

Steve is the founder of E.M.O. Civil, which he began in 1989. His love of big trucks and diggers led him to buy a tip truck. He learned the rules of the excavation game 'on the tools'. He soon purchased more equipment and put together a team to demolish building sites, dig swimming pools and excavate developments. Steve built the business from the ground up, so he has worn every hat, from estimator to operator, contract administrator, accountant, marketer and site manager.

Steve has been involved in many iconic projects in Sydney over the years such as the William Inglis Hotel and Riverside Stables in Warwick Farm, Wet 'n' Wild in Western Sydney and the Andrew Boy Charlton Swim Centre in Manly.

Steve takes ultimate responsibility for every project. He leads a large, highly experienced and committed team. He has built long term, solid relationships with many of the larger construction contractors and project managers, as well as with sub contract machine operators.

## OPERATIONS MANAGER

Our Operations Manager is responsible for managing the team at EMO Civil. He is responsible overall for the safety and environmental concerns of each projects' operations - basically he is the all round project troubleshooter.

Our Operations Manager will work across several departments to ensure our jobs are kept to a high standard.

## PROJECT ENGINEER/MANAGER

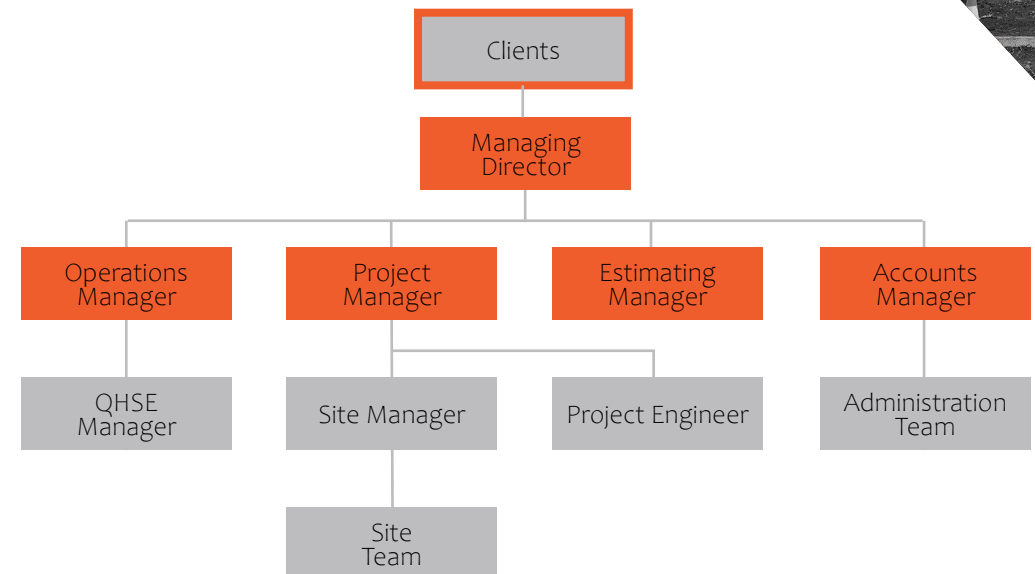
Our Engineers and PM's ensure our jobs run on time and on budget. They ensure works are completed to a high quality in a safe manner.

They will be the direct contact of a project and will be there to liaise with the clients to solve problems and create a good working relationship.

## ESTIMATING MANAGER

Our Estimating Manager is responsible for providing accurate and competitive quotes to all our clients.

Our Estimating Manager oversees all tenders and is responsible for tender selection to project hand-over.





# COMMUNITY

## **WOMEN IN THE CIVIL INDUSTRY**

We believe in equal opportunity employment and strongly women in the industry. By partnering up with skilled and dedicated teams our projects can move forward.

“Words can’t express the level of gratitude I feel for the belief and support shown by Steve and the team at EMO Civil.”

**Asha Russell, Managing  
Director Sage Civil**





**EMO CIVIL (AUSTRALIA) PTY LTD**  
**ABN 84 164 437 870**

PO BOX 4960, NORTH ROCKS NSW 2151  
P: (02) 8117 4497  
E: [admin@emocivil.com.au](mailto:admin@emocivil.com.au)

[www.emocivil.com.au](http://www.emocivil.com.au)

